

Roller and Skate Wheel Conveyor

Models

**RC10, RC12, RC14, RC16,
RC18, RC20, SWC10, SWC12,
SWC14, SWC16, SWC18,
SWC20**

Standard Features

- Stainless Steel Rollers
- Adjustable bullet feet

Warranty

- Two years parts and one year labor



Spec #

AIA #

APPLICATION

The straight-line roller and skate wheel conveyors are designed for tray make-up operations. These conveyors will help streamline tray assembly for any healthcare operation. Mobile or stationary, these units are designed for easy cleaning and long life. Since these units are built to customer specification, some units may not be available in mobile configuration. Please consult factory.

SPECIFICATIONS

The open pan conveyor body is constructed with 14-gauge 304 stainless steel. The conveyor is supported by 1 5/8" (4cm) O.D. 16-gauge stainless steel tubular legs, which are welded to 14-gauge channels. These channels are then welded directly to conveyor frame.

Skate wheel assemblies are 2" (5cm) diameter nylon wheels with low friction bushing for free movement. Wheels secured to frame with stainless steel bolts and stainless steel self-locking nuts. Wheels spaced on 3" (8cm) - 4" (10cm) centers to ensure positive contact between tray and roller. Wheels are removable for easy cleaning.

Rollers are 2" (5cm) O.D. grey PVC tubing with stainless steel ball bearings to ensure easy, reliable movement. Rollers are mounted on stainless steel, hex spring loaded shafts for easy removal during cleaning and replacement. The roller conveyor will handle compartmental or divided trays as well as flat bottom trays.

These conveyors come standard with stainless steel bullet feet which allows for adjustable height. For both type conveyors, tray size must be known when unit is ordered to provide proper size cross member and end plates to accommodate tray.

ALLUSERV, LLC

4900 West Electric Avenue | West Milwaukee WI | 53219

888-892-2213 | fax 636-239-8435 | info@alluserv.com | www.alluserv.com

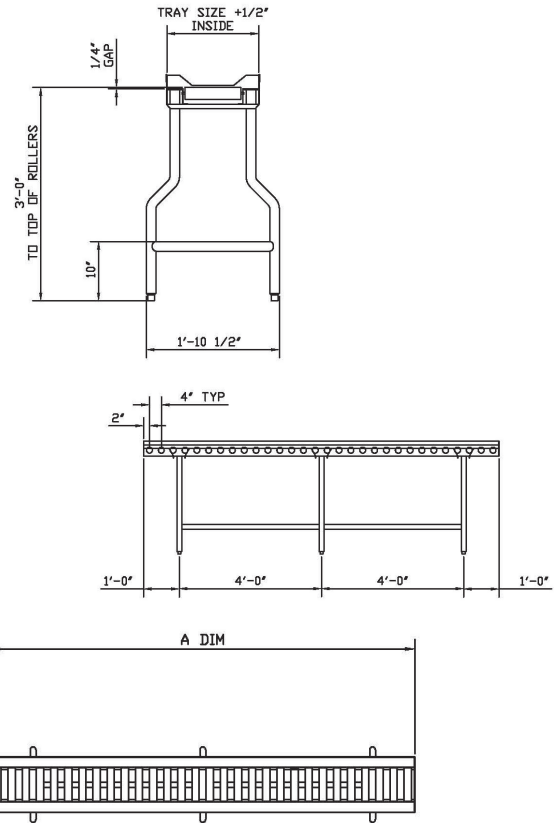
Roller and Skate Wheel Conveyor

Models

RC10, RC12, RC14, RC16, RC18, RC20,
SWC10, SWC12, SWC14, SWC16, SWC18,
SWC20

Options

- Electric Raceways- All units can be equipped with electric raceways for your electrical convenience.
- Outlets- Allows you to plug in all support equipment. No more drop cords. Single or three phase outlets are available in either straight blade or twist lock.
- Field Joint- Allows longer conveyors to be shipped and maneuvered to location in smaller sections.
- Moveable Over Shelf- This option gives extra surface area and easy access for dietary meal kits and other tray requirements.
- Casters- These conveyors come standard with adjustable bullet feet. Casters can be added if electrical loads permit
- Removeable Sections- Allows sections to be placed directly into dishwasher for easy cleaning.
- Cord & Plug- Conveyors are constructed for hard wiring as standard, requiring electrical service at location. Ground receptacle required for this option. This option is available on any unit with electric amp load of 100 or less.



MODEL INFORMATION

MODEL	A DIM	WIDTH	SHIP WEIGHT	MODEL	A DIM	WIDTH	SHIP WEIGHT
RC10	10 ft.	Tray size plus 1/2 inch	200 lbs	SWC10	10 ft.	Tray size plus 1/2 inch	200 lbs
RC12	12 ft.	Tray size plus 1/2 inch	240 lbs	SWC12	12 ft.	Tray size plus 1/2 inch	240 lbs
RC14	14 ft.	Tray size plus 1/2 inch	280 lb.	SWC14	14 ft.	Tray size plus 1/2 inch	280 lb.
RC16	16 ft.	Tray size plus 1/2 inch	320 lbs	SWC16	16 ft.	Tray size plus 1/2 inch	320 lbs
RC18	18 ft.	Tray size plus 1/2 inch	360 lbs	SWC18	18 ft.	Tray size plus 1/2 inch	360 lbs
RC20	20 ft.	Tray size plus 1/2 inch	400 lbs	SWC20	20 ft.	Tray size plus 1/2 inch	400 lbs



Spec #

AIA #